

ORG24

Research & Economic Development

ORG41

Alianza UCMX

DIV144
VC RED Administration

DIV234
Core Research Facilities

DIV235
Technology
Partnerships

Alianza UCMX

D01157
Research and
Economic
Development

D01158
Sponsored
Programs
Administration

D01234
Research
Administration
and Compliance

D01159
Campus
Veterinarian

D01238
Misc Core
Facilities

D02072
MRB

D02133
CALIT2

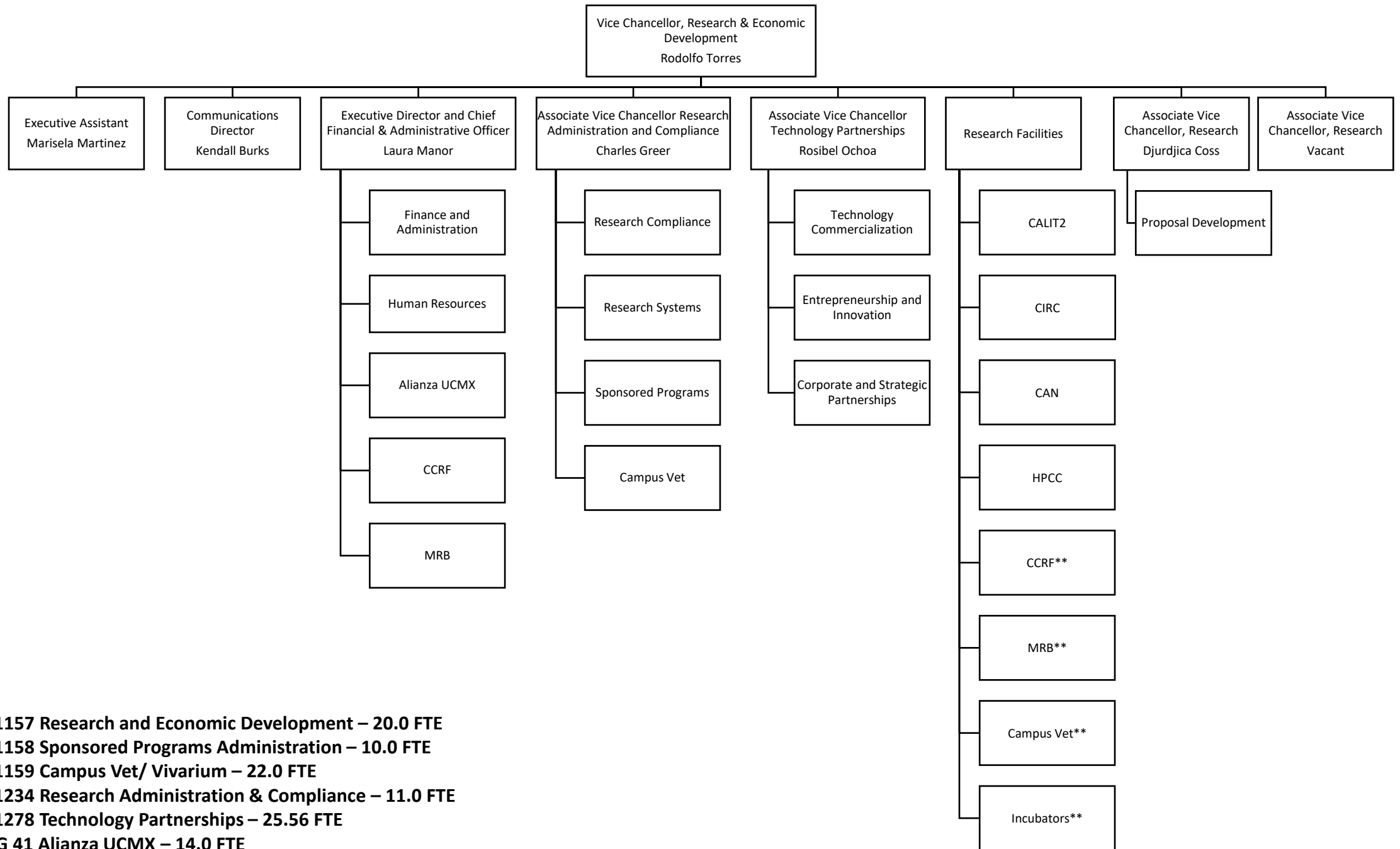
D02135
CIRC

D01278
Technology
Partnerships

D02079
Alianza

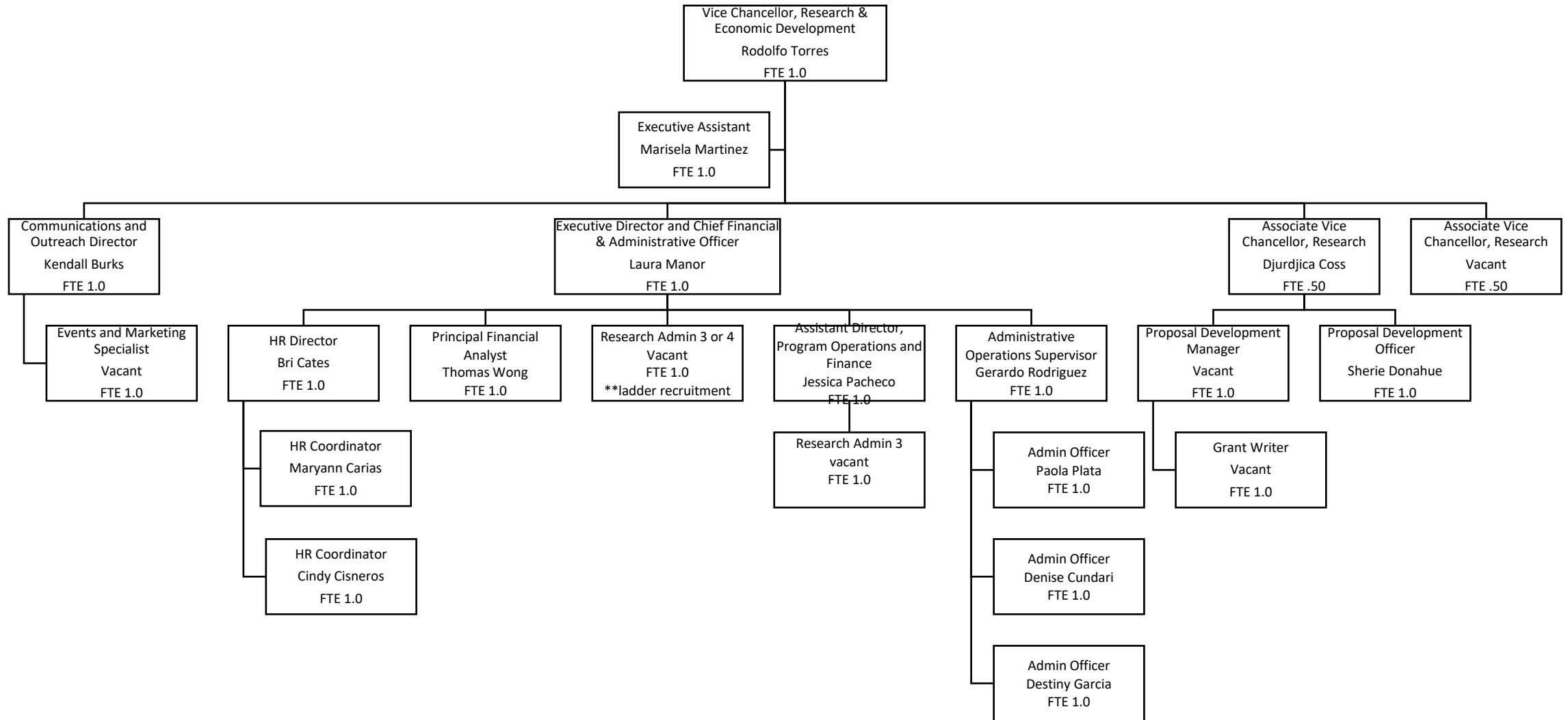
D02080
UC Mexus

D02081
Casa

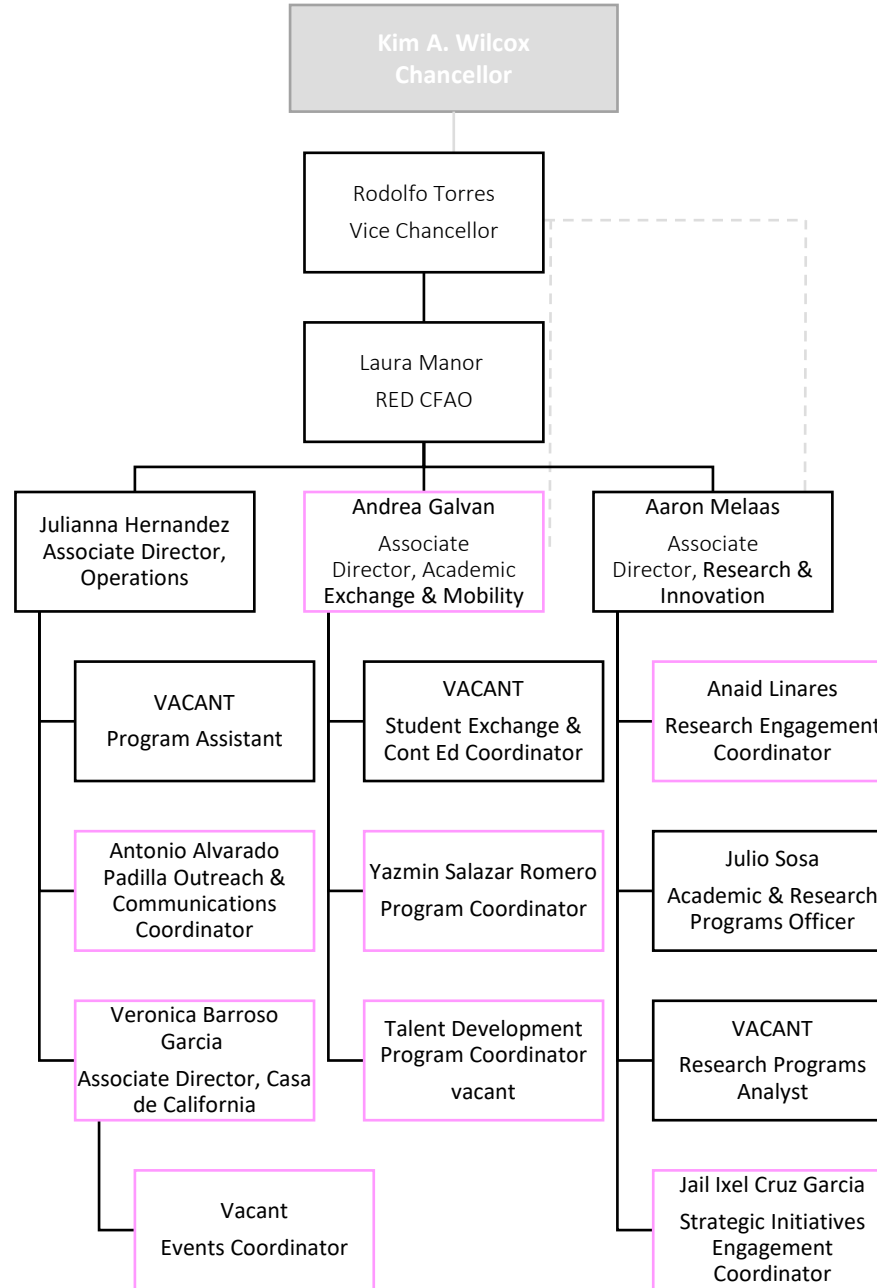


D01157 Research and Economic Development – 20.0 FTE
D01158 Sponsored Programs Administration – 10.0 FTE
D01159 Campus Vet/ Vivarium – 22.0 FTE
D01234 Research Administration & Compliance – 11.0 FTE
D01278 Technology Partnerships – 25.56 FTE
ORG 41 Alianza UCMX – 14.0 FTE
DIV234 Core Research Facilities – 14.0 FTE
Total FTE – 116.56

D01157
Office of the Vice Chancellor
FTE 20.0



D2079 Alianza
FTE 14
UCR 6.0
Casa 8.0



Research Administration and Compliance

D01158 Sponsored Programs Administration – 10.0 FTE

D01159 Campus Vet/ Vivarium – 22.0 FTE

D01234 Research Administration & Compliance – 11.0 FTE

Associate Vice Chancellor
Research Administration and Compliance
Charles Greer

Research Compliance

Campus Veterinarian

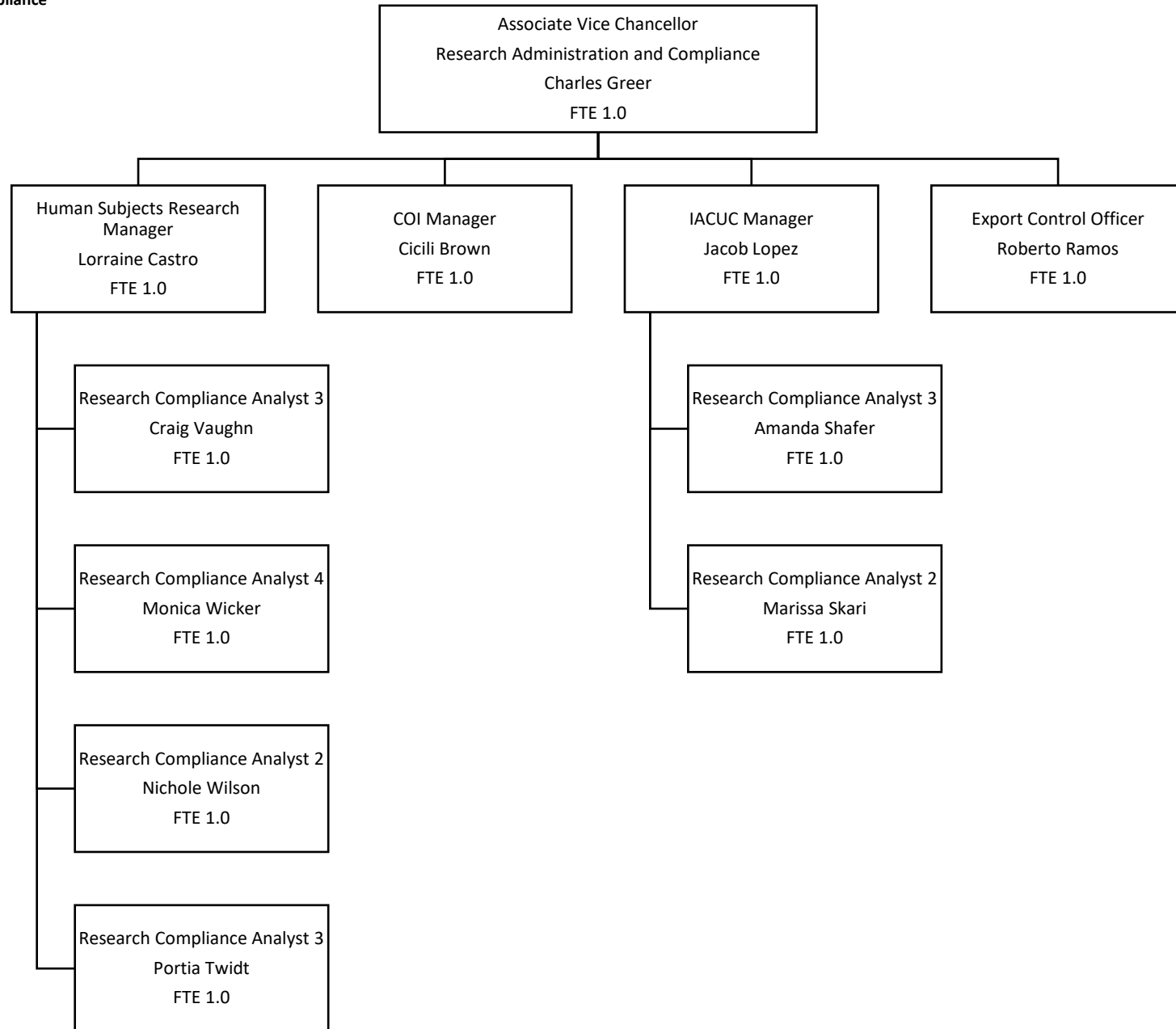
Sponsored Programs

Research Systems

Research Administration and Compliance

D01234 Research Administration & Compliance

FTE 11.0

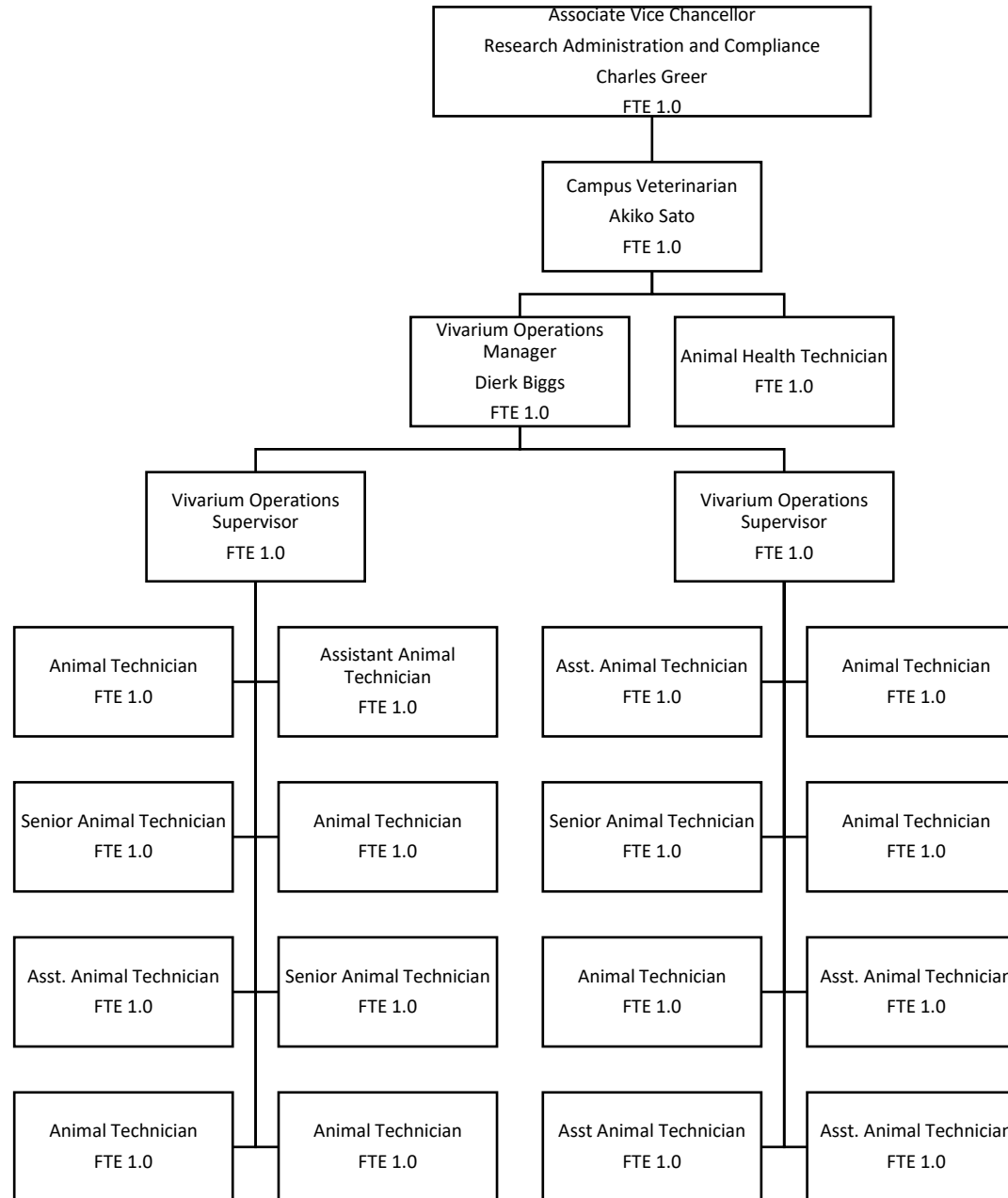


Updated as of October 2024

Research Administration and Compliance

D01159 Campus Vet/ Vivarium

FTE 22.0



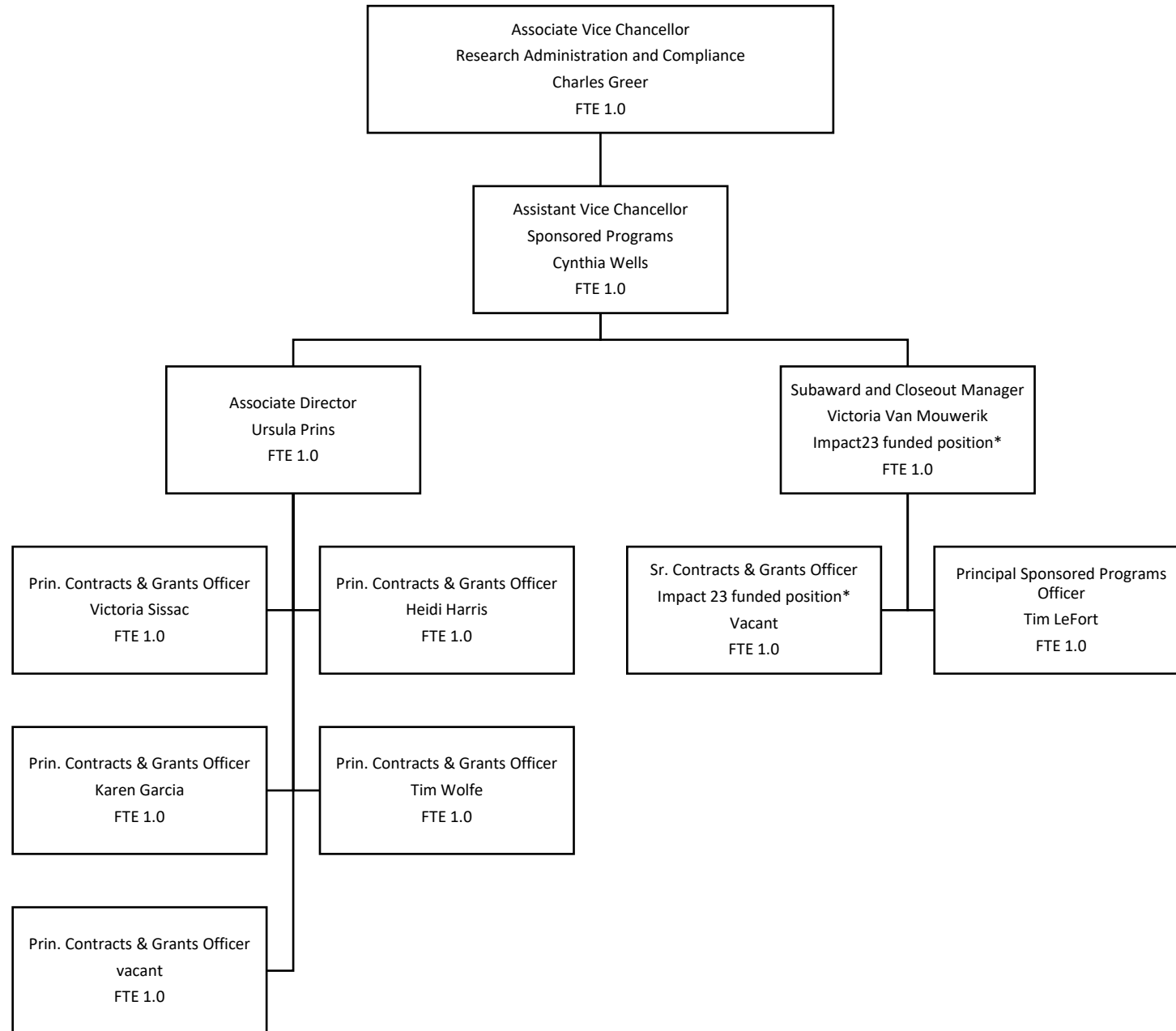
**Employee names have been removed for security purposes.

Updated as of October 2024

Research Administration and Compliance

D01158 Sponsored Programs Administration

FTE 10.0

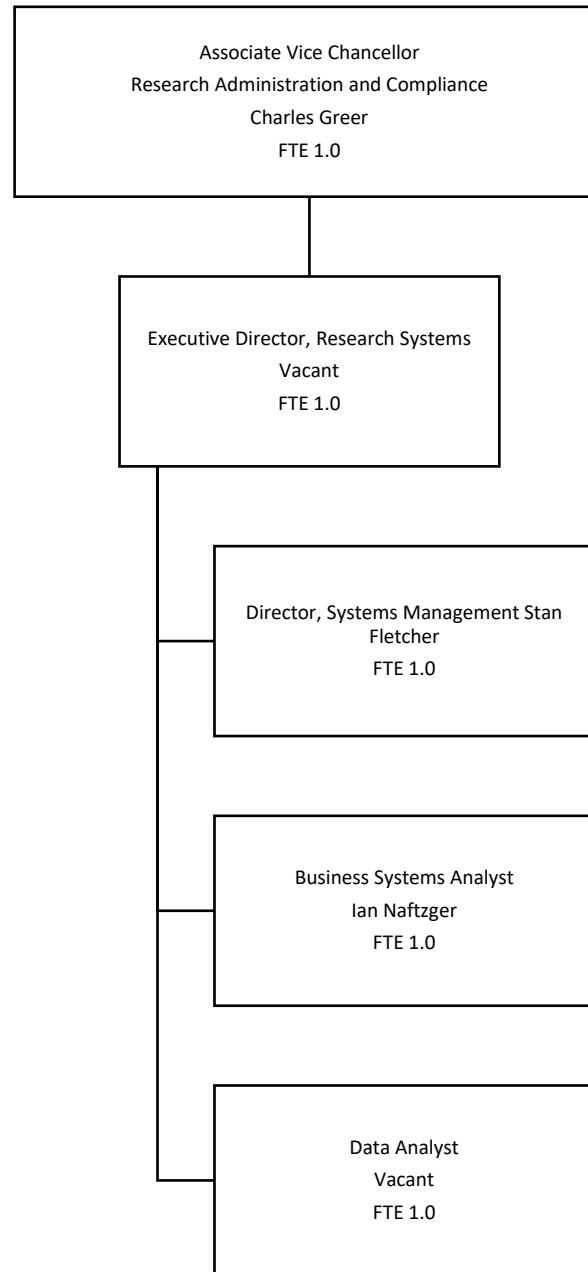


Updated October 2024

Research Administration and Compliance

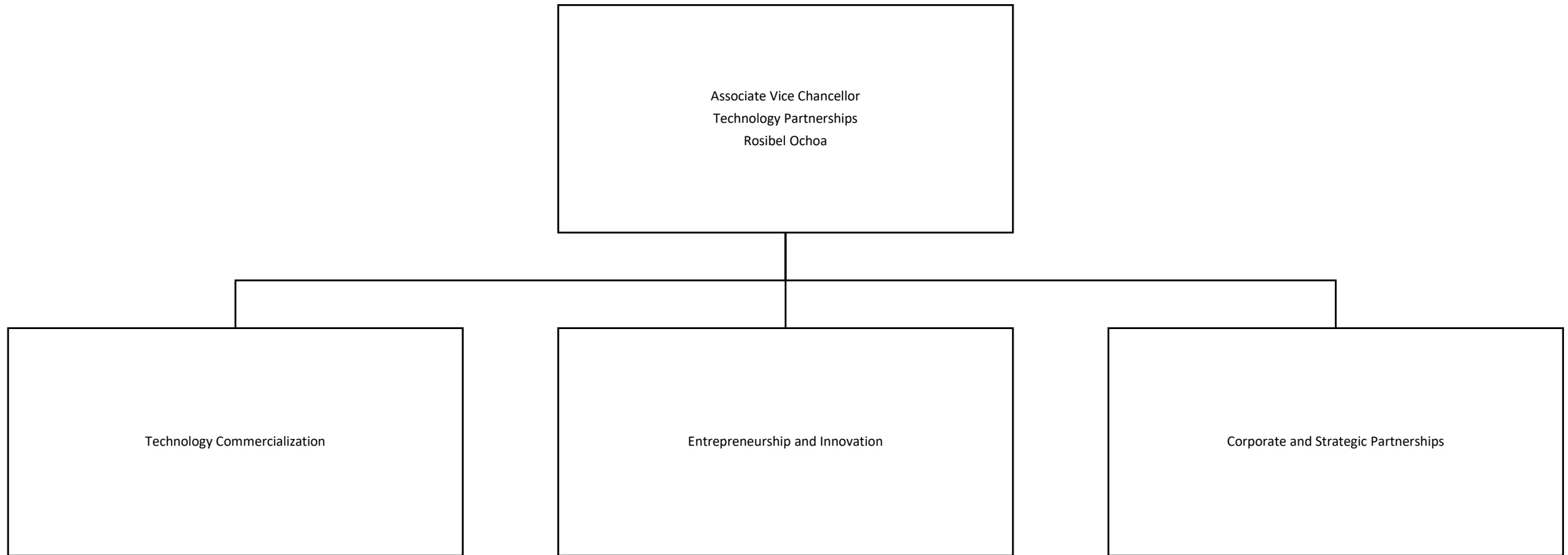
Research Systems

FTE 4.0



Updated as of October 2024

D01278 Technology Partnerships
Technology Commercialization – 8.1 FTE
Entrepreneurship and Innovation – 12.76 FTE
Corporate and Strategic Partnerships – 4.7 FTE



**Technology Partnerships
Entrepreneurship and Innovation
FTE 12.76**

Associate Vice Chancellor
Technology Partnerships
Rosibel Ochoa
FTE 1.0

Entrepreneurial Advisor
Shomit Ghose
FTE .20

Associate Director, International Programs
VACANT
FTE 1.0

Entrepreneurs in Residence
Frank Rexach FTE .60

EPIC SBDC Director
Martin Kleckner
FTE 1.0

MRB Incubator Manager
Maricela Covarrubias
FTE 1.0

Entrepreneur in Residence
Eric Gosink
FTE 1.0

Director, Center for Development & Innovation
Angelov Farooq
FTE .48

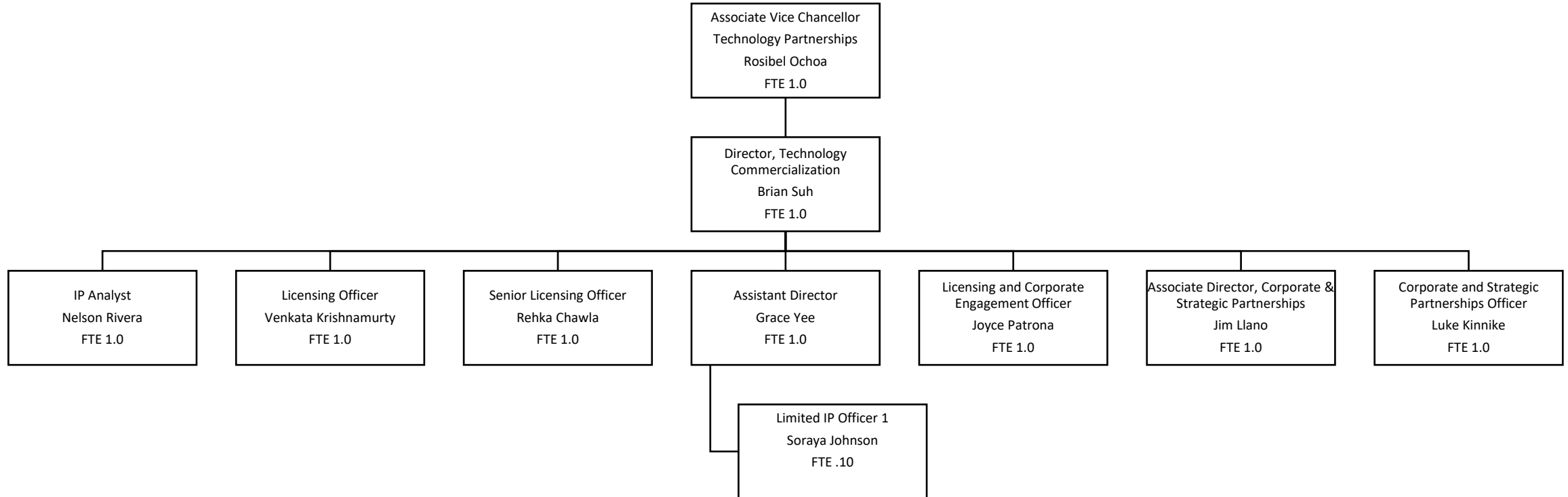
Entrepreneurs in Residence
Art Salyer FTE .60
Scott Brovsky FTE .60
Stephen Sharp FTE .33
Jay Kadowaki FTE .15
Galen Williams FTE .20
Isabelle Bart FTE .40
John Shearer FTE .20
Kevin Meredith FTE .40
Michael Lombardo FTE .20
Philip Topham FTE .20
Scott Eliasof FTE .20
Tariq Warsi FTE .20
Timothy Raines FTE .20
Total FTE: 3.88

Blackstone Entrepreneur in Residence
Francisca Reyes
FTE 1.0

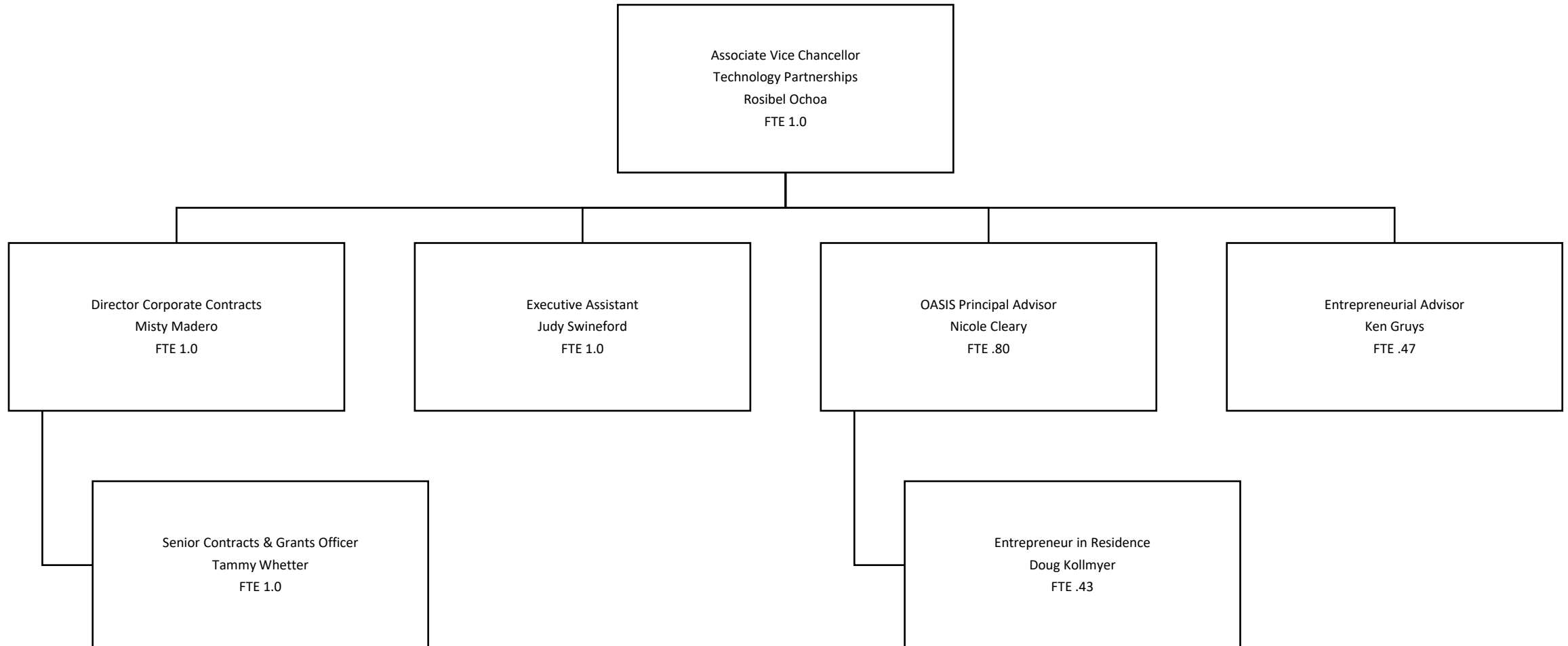
Lead Instructor, I-Corps
Jay Gilberg
FTE .60

Assistant Director, Special Programs and Outreach
Aileen Luib
FTE 1.0

**D01278 Technology Partnerships
Technology Commercialization
FTE 8.1**



**D01278 Technology Partnerships
Corporate and Strategic Partnerships
FTE 4.7**



RED Research Centers
FTE 14

